

2024-2025 Sustainability Report

Sookmyung Women's University

120 Years of Heritage, A Future of Innovation

120th Anniversary

120
Since
1906*

속명의 자부심, 새로운 120년

Proud Sookmyung, Beyond 120

SMWU Sustainability

A comprehensive overview of Sookmyung Women's University's sustainability journey, celebrating 120 years of women's education leadership and our commitment to the UN Sustainable Development Goals.



Vision

- President's ESG commitment
- Historical identity and legacy
- Sookmyung Vision 2030

Social Impact

- Gender equality initiatives
- Quality education programs
- Community and global partnerships

Environmental Stewardship

- Climate action strategies
- Smart and green campus
- Sustainability education

Governance & Ethics

- Participatory governance
- Ethical management
- Financial transparency

Performance Metrics

- SDGs alignment index
- Media highlights archive
- Evidence-based tracking

Future Commitment

- Leading the future
- Empowering 'Outthinkers'
- Next century vision



Message from the President

Celebrating 120 Years of Heritage: Pioneering the Future as "Outthinkers"

As the President of Sookmyung Women's University, it is my great honor to present our 2024-2025 Sustainability Report. This edition marks a monumental milestone in our history: our 120th anniversary. Since our founding in 1906 as Korea's first women's educational institution established under imperial patronage, Sookmyung has served as a steadfast beacon of empowerment, resilience, and social responsibility.

Today, we stand at a critical turning point. Beyond celebrating our rich legacy, we are advancing a bold new vision: "Outthinkers." This vision reflects our commitment to nurturing leaders who transcend conventional boundaries, creating new pathways through innovation and digital humanism. "Outthinkers" are leaders who don't just follow trends—they redefine them through the lens of ethical progress and sustainable impact.

Under this vision, Sookmyung is firmly committed to advancing the UN Sustainable Development Goals(SDGs).

We are integrating these global benchmarks into our core identity by:

Championing Gender Equality(SDG 5): Building on our century-long leadership to ensure women remain at the forefront of global decision-making.

Spearheading Ethical AI Education(SDG 9): Pioneering a curriculum that empowers the next generation of digital leaders to build technology that serves humanity.

Driving Environmental Stewardship(SDG 12): Transforming our campus into an eco-friendly hub and fostering global partnerships for climate action.

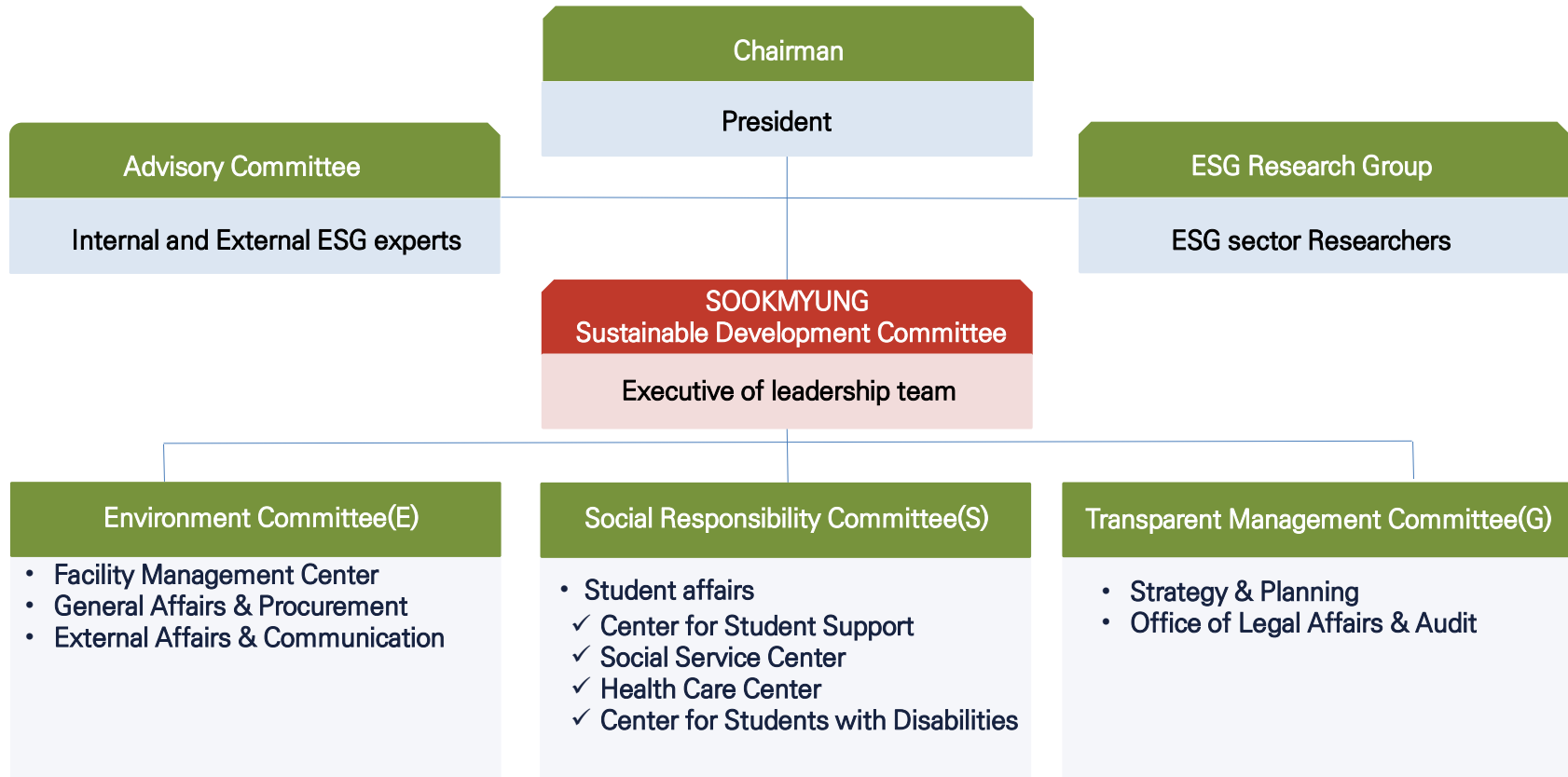
From our community-driven social mobility programs to our expansive global network, Sookmyung is more than an educational institution; we are a global engine for sustainable change. We invite you to join us as we build upon 120 years of wisdom to create a more equitable, innovative, and sustainable world for the century ahead.

Si Yeun MOON, Ph.D.

President

Sookmyung Women's University

SOOKMYUNG Sustainable Development Committee



SOOKMYUNG Sustainable Development Committee



- Chairman, President, Final Decision-making and Strategic Leadership
- Advisory Committee, Dean of External Affairs, Networking with ESG Experts & External Policy Consulting
- ESG Research Group, Dean of Research Affairs, Managing ESG Research Outputs & Indicator Analysis
- Environment Committee(E), Dean of General Affairs Management, Carbon-neutral Campus & Eco-friendly Resource Management
- Social Responsibility Committee(S), Dean of Student Affairs, Social Contribution, Human Rights, Diversity, and Welfare
- Transparent Management Committee(G), Dean of Strategy & Planning, Ethical & Transparent Management, and Financial Sustainability



President's Message: Commitment to ESG Management



ESG Management for the Next Century

- ESG commitment
- 120 years of excellence
- Sustainability across operations



The 'Outthinkers' Spirit

- Break barriers and bias
- Foster innovative thinking
- Empower women leaders



Sustainable Future Leadership

- Long-term sustainable vision
- Cultivate future-ready leaders
- Advance women's leadership in 4IR

Historical Identity & Institutional Integrity



1

First Royal-Founded National School for Women

Korea's first national women's school founded with royal patronage

2

Historical Responsibility and Legacy

Continuing 120 years of empowerment, social progress, and educational innovation

3

Alignment with SDG 16: Peace, Justice and Strong Institutions

Uphold integrity, promote inclusive societies, and ensure access to justice

Sookmyung Vision 2030

01 120th Anniversary Vision Proclamation

- Decadal vision
- Commit to Outthinkers
- Merge sustainability and innovation

02 Future Roadmaps & Strategic Directions

- Strategic pathways for academic excellence
- Digital transformation and AI integration
- Global partnership expansion initiatives

03 Key Milestones & Objectives

- Achieving carbon neutrality by 2030
- Expanding scholarships and student support
- Strengthening women's leadership in STEM fields



Gender Equality & Future Talent (SDG 5 & 9)



Global Women's Leadership Forum

- 120th forum with global women
- Women's role in 4IR discussed
- Building networks for future leaders



Gender Equality & Future Talent (SDG 5 & 9)



Breaking Gender Barriers in STEM

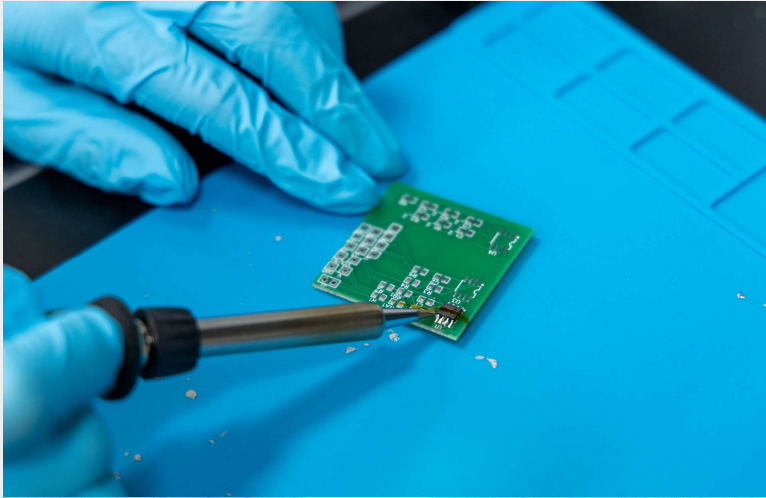
- Sookmyung Holds “Women in STEM” Forum with EU Delegation to Korea for International Women’s Day
- Boosting women's AI & tech roles
- Closing digital gender gap via education
- Pathways for female innovation & leadership



Redefining the 'Outthinkers' Mission

- Breaking traditional gender barriers
- Empowering women to lead tech change
- Cultivating future-ready talent across fields

Cultivating Female AI Talents



• Launch of the AI Center(SDG 9)

- AI Center opened for 120th expansion
- Offers data literacy & AI training to all
- Directly tackles the digital gender gap
- Received the Minister of Science and ICT Award, recognizing her outstanding leadership in educational management and achievements in research innovation.



• Digital Literacy Initiatives(SDG 4,5,9)

- Digital literacy for all majors
- Training on 4IR skills and tech tools
- Empowers female students; aligns with Outthinkers

Women in the 4th Industrial Revolution

- Global Women's Forum on women's tech role
- Intl. network sharing AI insights
- Preparing next-gen Outthinkers for digital economy
- Industry partnerships for applied AI
- Curriculum in ML, data science, emerging tech
- Promoting STEM career pathways



Quality Education & Social Mobility (SDG 4 & 10)



1

Founding Spirit of Social Responsibility

- 120-year legacy as first royal-founded women's school



2

Accessible Quality Education for All

- Quality education accessible to all, breaking social barriers

3

Talent as the Only Prerequisite

- Merit-based access ensures equal opportunities regardless of finances

Fundraising Campaign



'Proud Sookmyung 120' Initiative

Major campaign honoring Sookmyung's 120 years; expanding scholarships to give socio-economically vulnerable students financial stability so talent is the sole requirement



Expanding Social Mobility Scholarships

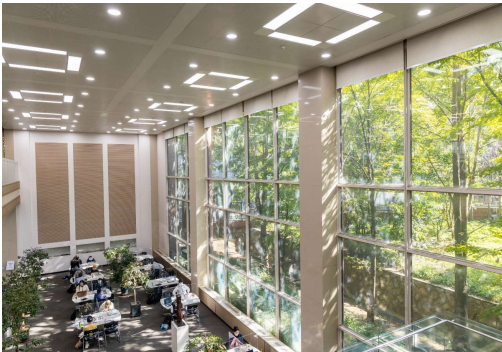
- Comprehensive scholarships for disadvantaged students
- Covers tuition, living costs, materials
- Removes financial barriers to higher education
- Shows institutional commitment to equity (SDG 10)
- Invests in future leaders and social mobility

Inclusive Campus Life: Student Well-being Programs



Thousand-won Breakfast' Program(SDG 3)

- Campus-wide affordable breakfast program
- Provides nutritional support for all students
- Addresses food security; promotes healthy starts



A portion of the funds supports the campus-wide affordable breakfast initiative, which addresses food security and ensures nutritional support for all students, promoting a healthy start to their academic day

Inclusive Campus Life: Student Well-being Programs



Mental Health Initiatives(SDG 3)

- Comprehensive mental health services
- Counseling, wellness, and stress-management programs
- Peer-support networks established



Supportive Academic Environment(SDG 3,4)

- Holistic student-success approach
- Promotes academic excellence via well-being
- Aligns with SDG 3 and 4; fosters inclusivity



Funding is also directed toward comprehensive mental health services, including counseling and peer-support networks, fostering an inclusive and supportive academic environment.

Community Engagement & Global Partnership (SDG 11 & 17)



Local Community Engagement in Yongsan

- Yongsan Campus Town boosts local economy and startups
- Revitalizes traditional markets like Yongmun Market
- Links academia with community; model for sustainable urban development(SDG 11)



Global Stage Presence and Collaboration

- Academic exchanges with top U.S. universities; international MOUs
- Uses collective intelligence to address global challenges(SDG 17)

Yongsan Campus Town Project



01 Supporting Local Economy(SDG 17)

- Cornerstone of local economy in Yongsan district
- Supporting local startups and entrepreneurship
- Collaboration between academia and community

02 Market Revitalization(SDG 8)

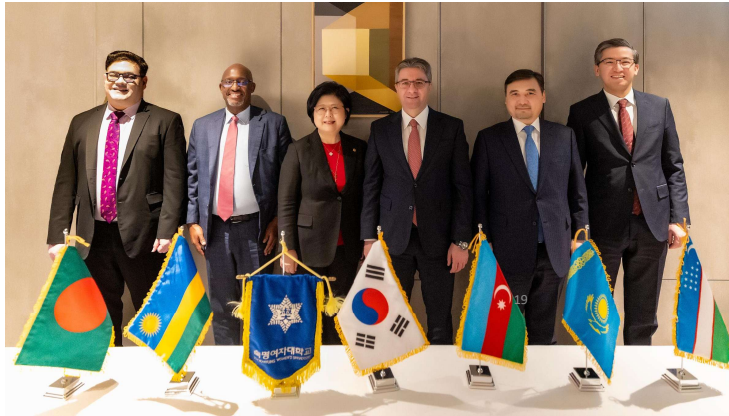
- Revitalizing traditional markets such as Yongmun Market
- Preserving heritage while fostering growth
- Creating opportunities for local businesses

03 Sustainable Urban Model(SDG 11)

- Model for sustainable urban development (SDG 11)
- Integrates university resources with community needs
- Builds long-term regional partnerships for prosperity



Global Knowledge Exchange



High-Level Diplomatic Partnerships(SDG17)

- Boosting global presence
- Building cross-cultural bridges



International Academic Collaboration(SDG17)

- Tackling global challenges(SDG 17)
- Sharing knowledge for sustainability
- World's Top 2% Scientists 2025," jointly announced by Stanford University (USA) and global academic publisher Elsevier.

Climate Action & Energy Stewardship (SDG 13)



Eco-Friendly Infrastructure

- Sustainable building development
- Green construction materials
- Energy-efficient facilities



2nd Campus Innovation Zone

- Sustainable development plans
- Innovation-focused design
- Smart campus integration



Data-Driven Energy Management

- Carbon emissions reduction
- Energy consumption optimization
- Real-time monitoring systems

Environmental Impact: Smart & Green Campus



1

Reducing Carbon Emissions(SDG 13)

- Implementing carbon reduction strategies across campus
- Monitoring and minimizing greenhouse gas emissions

2

Optimizing Energy Consumption(SDG 7)

- Smart energy systems for efficient resource use
- Renewable energy integration and conservation programs

3

Facilities Management Data Utilization(SDG 9)

- Data-driven decision making for sustainability
- Real-time tracking and performance optimization

Sustainability Education & Literacy



01 Staff Environmental Training(SDG 4 & SDG 8)

- Mandatory environmental training for staff
- Building capacity for sustainable practices
- Integrating sustainability into operations

02 Student Sustainability Courses(SDG 4)

- Expand sustainability courses across majors
- Interdisciplinary environmental education
- Prepare students for green careers

03 Campus-Wide Awareness(SDG 12)

- Build environmental awareness campus-wide
- Promote sustainable lifestyle choices
- Foster a culture of responsibility



Participatory Governance



• Strengthening Student Representation(SDG 16)

- Enhanced student representation in Senate
- Inclusive decision-making processes
- Empower student voices in governance



• Transparent and Inclusive Leadership(SDG 16)

- Transparent leadership and accountability
- Participatory university management
- Open channels for stakeholder communication

Ethical Management & Financial Transparency



Annual Financial Reporting(SDG16,17)

- Annual financial reports published
- Transparent accounting for accountability
- Open access to financial data
- Commitment to ethical management



Public Disclosure of 120th-Anniversary Funds(SDG16,17)

- Public disclosure of 120th funds
- Detailed fundraising and spending
- Transparent allocation of campaign resources
- Regular scholarship fund updates

SDGs Alignment Index



Mapping Institutional Activities to UN Sustainable Development Goals

Sookmyung systematically maps institutional activities to the UN SDGs, ensuring alignment across education, social, environmental, and governance efforts.

Evidence-Based Performance Tracking

- SDG 4: Quality Education via accessible programs
- SDG 5: Gender Equality via leadership initiatives
- SDG 9: Industry & Innovation via AI Center
- SDG 10: Reduced Inequalities via scholarships
- SDG 11: Sustainable Cities via Campus Town
- SDG 13: Climate Action via green campus



120th Anniversary Media Highlights

Archive of Major Press Coverage

In 2025, Sookmyung's 120th celebrations drew major media attention, highlighting historic milestones, innovations, and commitment to sustainable development.

Public Recognition and Impact

- Digital archive of press releases and coverage
- Documentation of Global Women's Leadership Forum
- Coverage of AI Center launch and literacy initiatives
- Features on 'Proud Sookmyung 120' campaign
- International recognition of diplomatic visits
- Acknowledgment of community engagement projects

Leading the Future with 120 Years of Heritage



As Sookmyung marks 120 years, we reaffirm commitment to sustainable development and the 'Outthinkers' vision, carrying our royal-founded legacy into a future of innovation and global leadership.

Via ESG management we empower future female leaders in AI, STEM, and beyond; our efforts in gender equality, education, community engagement, and environment reflect dedication to the UN SDGs.

With transparent governance and ethical management, Sookmyung transforms lives; the next century will be led by 'Outthinkers' who challenge norms, drive innovation, and lead with purpose.



Leading the Future with 120 Years of Heritage



Sookmyung Women's University, celebrating its 120th anniversary, is redefining **Women's Leadership** by integrating its **Imperial Heritage** with cutting-edge **AI & K-Culture** research, contributing to **SDG 5 (Gender Equality)** and **SDG 9 (Innovation)** on a global scale.

120th Anniversary



숙명의 자부심, 새로운 120년
Proud Sookmyung, Beyond 120



Sookmyung Women' s University. Cheongpa-ro 47-gil 100(Cheongpa-dong 2ga), Yongsan-gu, Seoul, 04310, Korea
T. [+82-2-710-9114](tel:+82-2-710-9114) F. +82-2-718-2337

Copyright© Sookmyung Women's University. All Rights Reserved.